



PIONEERS IN SHUTTERS





TABLE OF CONTENTS

STANDARD ROLLING SHUTTERS PTE LTD	3
SMART SHUTTER SECURITY SYSTEM ©	4
TYPES OF ROLLER SHUTTER PRODUCTS	5
FC300 FOLDING CLOSURE	6
SECURITY BARRIERS	9
MVPS CLEAR SHUTTER (MOTORISED/MANUAL)	11
ALUMINIUM ROLLER SHUTTER (MOTORISED/MANUAL)	12
SEE-THROUGH PERFORATED SHUTTER (MOTORISED/MANUAL)	13
SPEED ROLLER SHUTTER (MOTORISED)	14
MINI MANUAL SHUTTER	15
HEAVY DUTY COLOURBOND WITH POWDER COAT SHUTTER	16
SVPS POWDER COAT SHUTTER (MOTORISED/MANUAL)	17
ALUMINIUM GRILLE SHUTTER (MOTORISED/MANUAL)	18
GRILLE WITH ACRYLIC INSERTS SHUTTER	19
OVERHEAD SECTIONAL DOORS	19
GRILLE	19
ACCESSORIES	20
COLOUR CHART FOR POWDER COAT	22



STANDARD ROLLING SHUTTERS PTE LTD

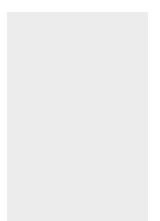
Since its inception in 1978, Standard Rolling Shutters Pte Ltd (SRSPL) products answer the needs of the market and provide the highest standards of quality, functionality and simplicity in its use at competitive pricing to its customers. With over 40 years of experience and a myriad of roller shutter products under its belt, SRSPL has been assisting its customers by tailoring solutions most ideal for their businesses.

The company prides itself as a trusted partner in shutter security and is constantly improvising to meet that standard. In line with Singapore government's "Smart Nation" initiative to put in place innovative infrastructures in 2018, SRSPL is proud to pioneer the launch of 'Smart Shutter Security System©'. The first in the market – It is a one-stop shutter security solution for smart businesses which integrates shutters with access control, alarm and surveillance (CCTV) system which can be intelligently controlled through an app anywhere, anytime.

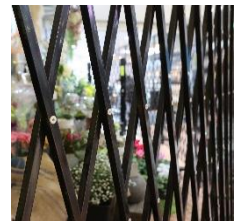
EXPERIENCED TEAMS



QUALITY PRODUCTS



IMPECCABLE SERVICE



SMART SHUTTER SECURITY SYSTEM ©



SMART SHUTTER SECURITY SYSTEM ©



EVERYONE WANTS THAT SIMPLE TOUCH

Our Smart Shutters© focuses on providing a comprehensive one-stop shutter security solution for smart businesses. It integrates smart biometric access control, alarm and surveillance systems which can be intelligently controlled through an app anywhere, anytime.

WIRELESS CONTROL VIA SMARTPHONE



Keep an Eye on your Business

Watch live HD Video from your smartphone anytime, anywhere for free when connected to WiFi



Alerts You to Trouble

Instant SMS Notifications during lock-down and intrusion so you can see what's happening and take action.



Capture Critical Evidence

See what happened before, during, and after the intrusion. With an optional recording plan, you can record, store and share critical footage.

SMART ACCESS CONTROL ONSITE



Biometric



Pin Code Access



Unique Card Access



Remote Control

Control. Monitor. Track. Safeguard.

Let our Smart Shutters work smarter for your business. Let us help you transform complex security technology into something simple and intuitive. Smart Shutters© is just that - a powerful shutter security system for your business that is deceptively easy to use.





TYPES OF ROLLER SHUTTER PRODUCTS



FC300 FOLDING CLOSURE



SECURITY BARRIERS



MVPS CLEAR SHUTTER
(MOTORISED/MANUAL)



ALUMINIUM ROLLER SHUTTER
(MOTORISED/MANUAL)



SEE-THROUGH PERFORATED SHUTTER
(MOTORISED/MANUAL)



SPEED ROLLER SHUTTER
(MOTORISED)



MINI MANUAL SHUTTER



HEAVY DUTY COLOURBOND WITH POWDER COAT SHUTTER



SVPS POWDER COAT SHUTTER
(MOTORISED/MANUAL)



ALUMINIUM GRILLE SHUTTER
(MOTORISED/MANUAL)



GRILLE WITH ACRYLIC INSERTS SHUTTER



OVERHEAD SECTIONAL DOORS



GRILLE



ACCESSORIES



Our Products & Services
come with warranty.

new

Scan Me!



FC300 FOLDING CLOSURE



FEATURES

Most space efficient folding closures on the market. Cost-effective doors are constructed from aluminium making them lightweight yet stable and strong.



OUTLOOK

- Polycarbonate → 3mm thick polycarbonate panels provide remarkable impact-resistance and reinforced with our nylon fixing profile.
- Perforated Aluminium → 3mm thick aluminium sheeting which provides approximately 50% ventilation with 5mm diameter multi holes, reinforced with our nylon fixing profile.



SUITABILITY

Shopfronts, reception areas, free standing kiosks, shopping centres, hospitals, hotels, clubs and banks.



OPERATION

The doors are manually operated and can either be single or bi-parting in operation, stacking to one side or two sides as required depends on side room clearances.



LOCKING

The leading posts will be fitted with a lock and 2 key cylinders which can be operated from both sides. As a standard, the lock is supplied with a "builders key".



MAXIMUM SIZES

Our folding closures can be manufactured to a maximum height of 4,500mm and can span any width opening.



FINISHES

Matte natural anodized (NA) aluminium



[Click here to view!](#)



Back to Contents Page



Technical Information for FC300 Folding Closure

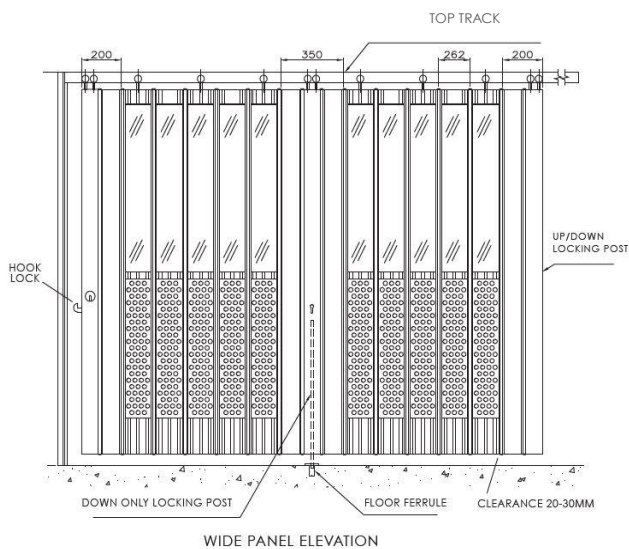
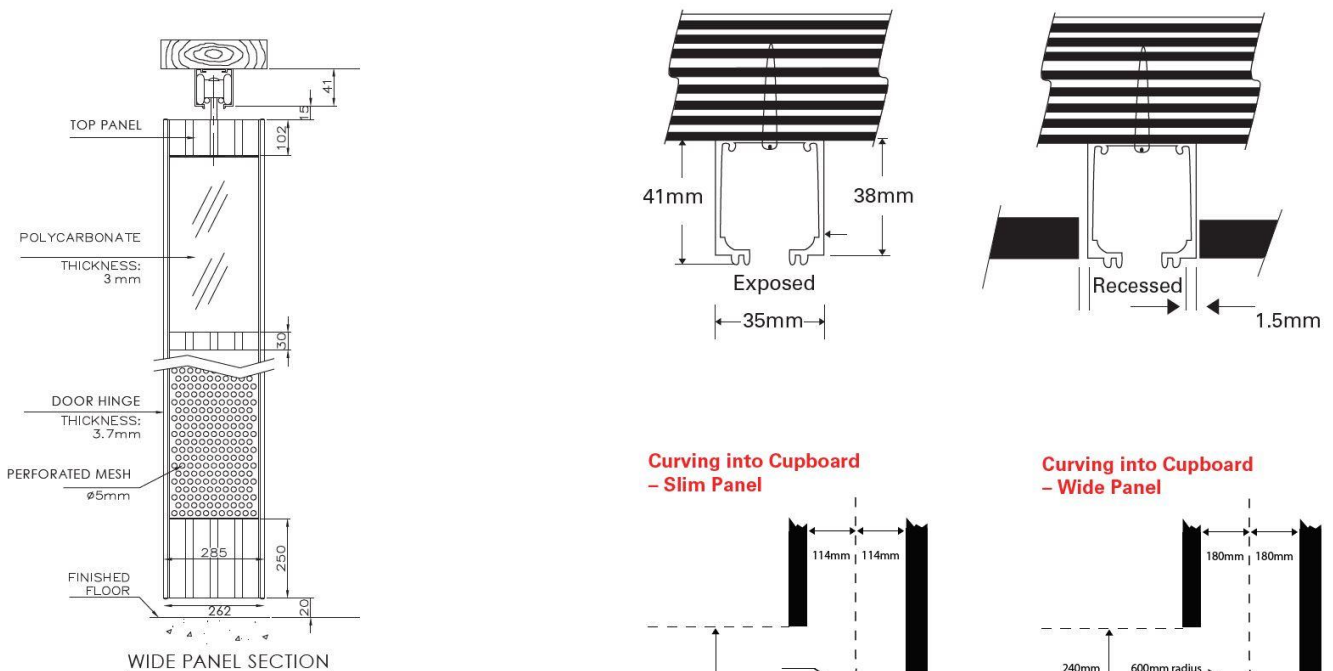
STACKING POCKET SIZES

FC 1 - SINGLE STACK FOLDING CLOSURE DOOR SPECIFICATIONS																													
Panel Width	Internal dimension reqd.	Opening width	1500	1750	2000	2250	2500	2750	3000	3250	3500	3750	4000	4250	4500	4750	5000	5250	5500	5750	6000	6500	7000	7500	8000	8500	9000	9500	10000
			Min stacking	310	330	340	360	380	510	530	550	560	580	590	610	630	640	660	800	810	830	840	880	910	940	1110	1140	1170	1190
148	228	dimension reqd	390	420	460	490	520	690	720	750	790	820	850	880	910	950	980	1150	1180	1210	1240	1310	1370	1440	1620	1690	1750	1810	1880

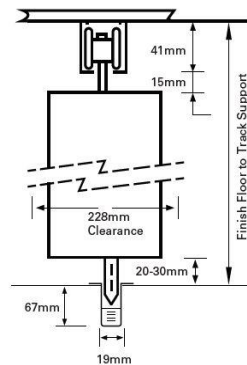
Please note stacking sizes above are indicative only. Please consult ATDC prior to finalising your stacking pocket.

FC 1 - DOUBLE STACK FOLDING CLOSURE DOOR SPECIFICATIONS																													
Panel Width	Internal dimension reqd.	Opening width	3000	3250	3500	3750	4000	4250	4500	4750	5000	5250	5500	5750	6000	6500	7000	7500	8000	8500	9000	9500	10000	10500	11000	11500	12000	12500	13000
285	360	Min stacking	620	560	590	590	620	620	650	650	680	900	930	930	960	990	1020	1060	1090	1120	1120	1150	1180	1460	1490	1520	1520	1560	1590
148	228	dimension reqd	780	810	840	880	910	940	970	1000	1040	1330	1360	1390	1420	1490	1550	1620	1680	1740	1810	1870	1940	2260	2320	2390	2450	2520	2580

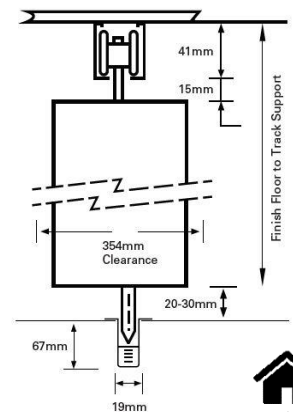
Please note stacking sizes above are indicative only. Please consult ATDC prior to finalising your stacking pocket.



Cross Section - Slim Panel



Cross Section - Wide Panel





Polycarbonate Plate Test Report S09MEC03448TYW


Test Report No. S09MEC03448/TYW
dated 18 JUN 2009

Note: This report is issued subject to TÜV SÜD PSB's "Terms and Conditions Governing Technical Services".
The terms and conditions governing the issue of this report are set out as attached within this report.

SUBJECT:
PC Plate Testing

TESTED FOR:
Standard Rolling Shutters Pte Ltd
Blk 1047 Eunus Avenue 5B
#01-01
Singapore 409608
Attn: Mr Lim Swee Kin

SAMPLE DESCRIPTION:
Twenty pieces of PC Plate samples, said to be Lexan PC, with nominal size of 300x90x2.2mm were submitted by Standard Rolling Shutters Pte Ltd on 20 May 2009 for testing.



TEST METHOD:
1. ASTM D256 - 06a
Standard Test Methods for Determining the Izod Pendulum Impact Resistance of Plastics
Nominal Specimen dimensions : 84 mm x 12 mm x 2mm
Capacity of pendulum : 5.5 J
No. of determinations : 10
2. UL 94
Test for Flammability of Plastic Materials for Parts in Devices and Appliances Test Conditions
Normal condition : 23 ± 2°C and 50 ± 5 %RH for a minimum of 48 hrs
Aging condition : 70 ± 1°C for 168 hrs and then cooled for 4 hrs
No. of determinations : 5 each

TEST METHOD: (CON'D)
3. TSM 0503G
Fogging Test Method For Non-Metallic Materials (method B)
Test conditions : 100°C for 3 hrs
No. of determinations : 3
4. ISO 4802-2 : 2006
Plastics - Method of exposure to laboratory light sources - Part 2: Xenon-arc Sources Test conditions
Apparatus used : Xenotest Beta LM
Operating cycle : 102 mins of light followed by 18 mins of light and water spray
Light source (continuous) : Air-cooled Xenon-arc lamps
Filter system : Xenochrome 300 in Suprax cylinder
UV irradiance : 60 W/m² at 300 to 400 nm
Black standard temperature : 65 ± 3°C
Air temperature in test enclosure : 38 ± 3°C
Relative humidity in test enclosure : 65 ± 5%
Test duration : 168 hrs

TEST RESULTS:

SIN	Test	PC Plate sample
1	Izod Impact Resistance, J/m Mode of failure	Non-break
2	Flammability * a) Normal condition b) Aging condition	V-2 V-2
3	Fogging, % (average)	97.8
4	Xenon-arc Accelerated Weathering Test, 168 hrs	Moderate yellowing to grey scale 4. No cracking or other observable changes.

* : The classification of materials according to UL94 is given in Appendix A.

Page 1 of 4

Test Report No. S09MEC03448/TYW
dated 18 JUN 2009

TEST METHOD: (CON'D)
3. TSM 0503G
Fogging Test Method For Non-Metallic Materials (method B)
Test conditions : 100°C for 3 hrs
No. of determinations : 3
4. ISO 4802-2 : 2006
Plastics - Method of exposure to laboratory light sources - Part 2: Xenon-arc Sources Test conditions
Apparatus used : Xenotest Beta LM
Operating cycle : 102 mins of light followed by 18 mins of light and water spray
Light source (continuous) : Air-cooled Xenon-arc lamps
Filter system : Xenochrome 300 in Suprax cylinder
UV irradiance : 60 W/m² at 300 to 400 nm
Black standard temperature : 65 ± 3°C
Air temperature in test enclosure : 38 ± 3°C
Relative humidity in test enclosure : 65 ± 5%
Test duration : 168 hrs

TEST RESULTS:

SIN	Test	PC Plate sample
1	Izod Impact Resistance, J/m Mode of failure	Non-break
2	Flammability * a) Normal condition b) Aging condition	V-2 V-2
3	Fogging, % (average)	97.8
4	Xenon-arc Accelerated Weathering Test, 168 hrs	Moderate yellowing to grey scale 4. No cracking or other observable changes.

* : The classification of materials according to UL94 is given in Appendix A.

Page 2 of 4

Test Report No. S09MEC03448/TYW
dated 18 JUN 2009

Appendix A : UL94 classification of materials

Criterial conditions	V-0	V-1	V-2
Afterflame time for each individual specimen t_1 or t_2	≤ 10s	≤ 30s	≤ 60s
Total afterflame time for any condition set (t_1 plus t_2 for the 5 specimens)	≤ 50s	≤ 250s	≤ 250s
Afterflame plus afterglow time for each individual specimen after the second flame application ($t_3 + t_4$)	≤ 30s	≤ 60s	≤ 60s
Afterflame or afterglow of any specimen up to the holding clamp	No	No	No
Cotton indicator ignited by flaming particles or drops	No	No	Yes

Page 3 of 4

Test Report No. S09MEC03448/TYW
dated 18 JUN 2009

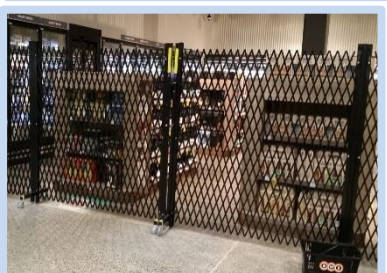
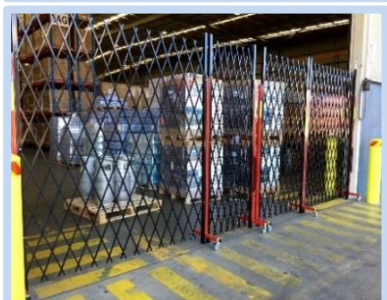
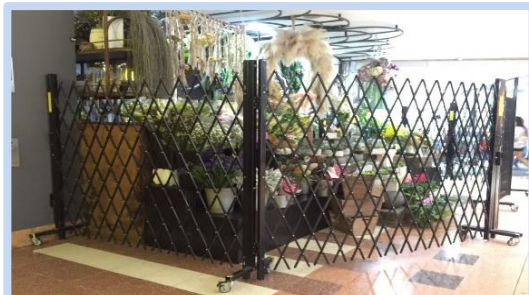
Appendix A : UL94 classification of materials

Criterial conditions	V-0	V-1	V-2
Afterflame time for each individual specimen t_1 or t_2	≤ 10s	≤ 30s	≤ 60s
Total afterflame time for any condition set (t_1 plus t_2 for the 5 specimens)	≤ 50s	≤ 250s	≤ 250s
Afterflame plus afterglow time for each individual specimen after the second flame application ($t_3 + t_4$)	≤ 30s	≤ 60s	≤ 60s
Afterflame or afterglow of any specimen up to the holding clamp	No	No	No
Cotton indicator ignited by flaming particles or drops	No	No	Yes

Page 4 of 4



SECURITY BARRIERS



FEATURES

This security barrier system is ideal for keeping your business safe because of its strength and functionality. The steel expanding grilles fits to any size openings and up to 2.5m high. The grilles can be fitted to the inside or outside of existing doors and using adjustable posts at intervals for support means you don't need top support or tracks.



OUTLOOK

The security barriers fold up to only 15% of its open size and folds neatly when not in use. The grilles allow shoppers to view products even after hours.



SUITABILITY

The security barrier system is completely trackless. It is suitable for barrier access for shopping malls, factory units, carparks, loading docks, function centres, warehouses, sporting facilities, crowd control and partitioning.



OPERATION

The system is manually operated. It can be permanently fixed against a post or be portable.



LOCKING

The grilles can be locked on either the left/right side or centre. The locking mechanism comprises of a security slam lock with high grade double hooks and locating pins for added strength and security.



MAXIMUM SIZES

Any size width. Maximum height of 2.5m



FINISHES

Epoxy powder coated and galvanised against corrosion



[Click here to view!](#)

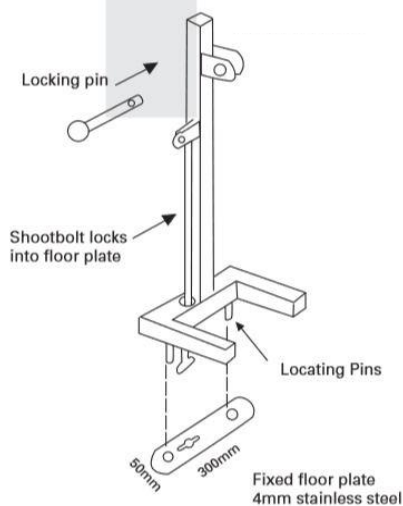


Back to
Contents Page

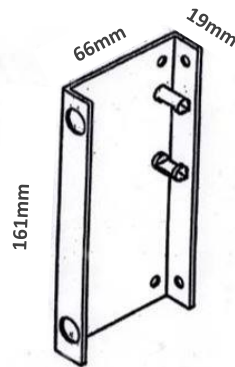


Technical Information for Security Barriers

Removable Lockable Bollard

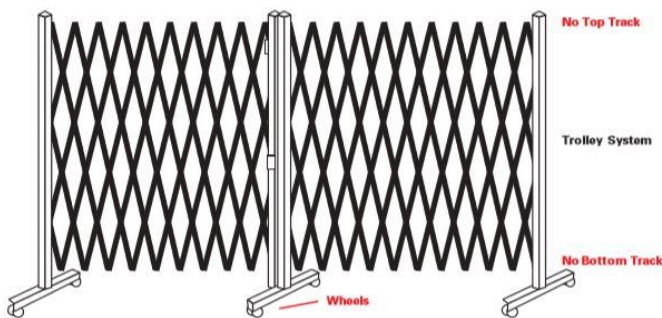
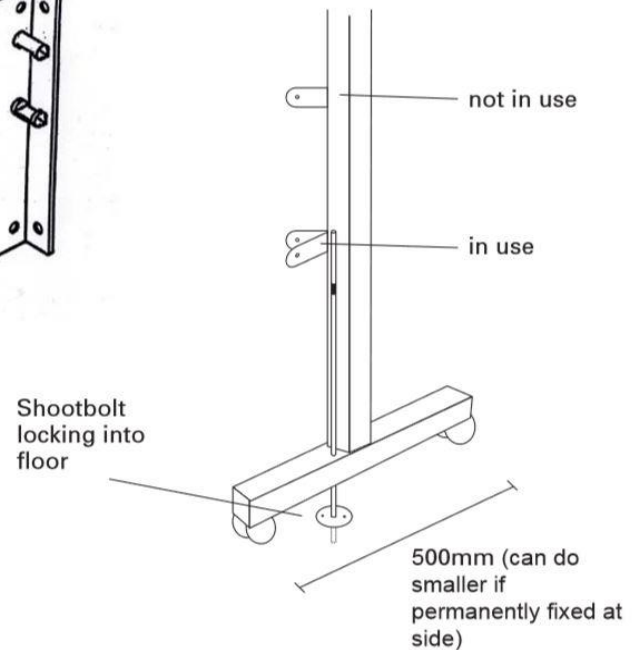


Lock Bracket



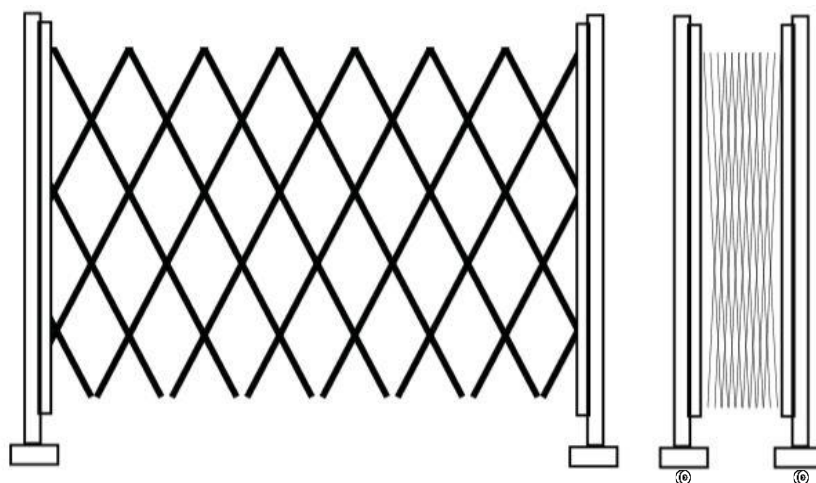
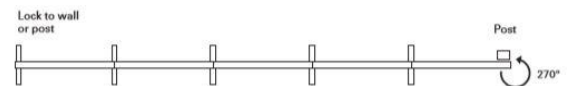
Locking Options

38mm x 38mm
RHS Steel



Note: Max height 2500mm

Plan view of trolley system showing 270° pivot rotation



Height: 2m

Open Width:
2m / 3m / Customisable

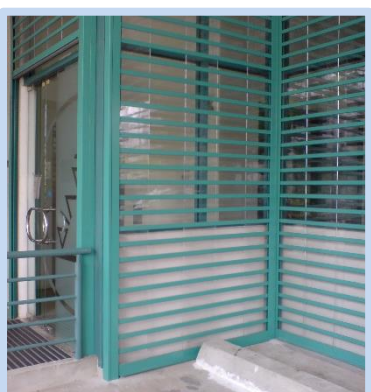
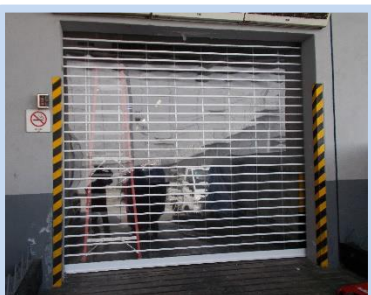
Closed Width:
0.5m / 0.75m / Varies accordingly

Weight:
2m = 37kg
3m = 52kg





MVPS CLEAR SHUTTER (MOTORISED/MANUAL)



FEATURES

This roller shutter uses non-metallic materials which allows for quick and quiet operation. It also uses an automatic safety system which stops the door immediately if it encounters resistance when rising and bounce upward when encountering resistance when lowering. This automatic roller shutter can also be operated manually in the case of a power outage.



OUTLOOK

Shutters are manufactured with anti-rust technology, which makes the door durable and anti-acid and base.



SUITABILITY

This system is suitable for banks, hypermarkets, coffeeshops, bin centres.



OPERATION

Automatic Operation with remote control/Biometric access control OR Manual Operation.



LOCKING

Automatic lock



MAXIMUM SIZES

6m width, 6m height



FINISHES

Colourbond

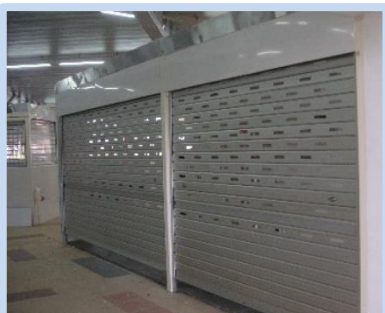
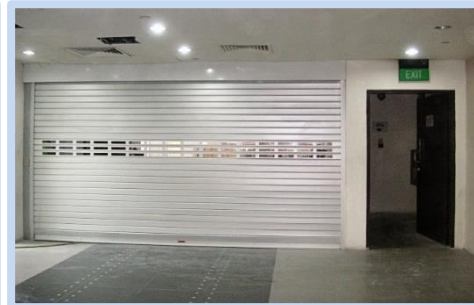


Our Products & Services come with warranty.





ALUMINIUM ROLLER SHUTTER (MOTORISED/MANUAL)



FEATURES

Aluminium Roller Shutters are commonly used in the shutter industry due to its smooth surface giving a very clean and neat outlook.



OUTLOOK

This shutter presents a pleasant and clean appearance. This shutter can also be customised to incorporate some perforated slats besides the all-plain full slats if customers have that requirement.



SUITABILITY

Aluminium shutters are ideally used in schools, canteen stalls, food courts, hospital hallways, market lock-up stall, shopping centres, shopfronts, flatted factories, HDB bin centres and residential garages.



OPERATION

Automatic Operation with remote control/Biometric access control OR Manual Operation.



LOCKING

Locks are installed either onto a slat at waist height or at the bottom rail with lock bars locking into both side of the door.



MAXIMUM SIZES

6.2m width x 7m height



FINISHES

Natural, bronze or black anodised, powder coated or fluorocarbon coated finishes



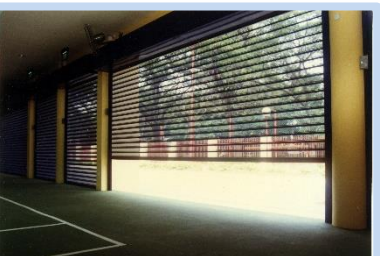
Our Products & Services
come with warranty.



Back to
Contents Page



SEE-THROUGH PERFORATED SHUTTER (MOTORISED/MANUAL)



FEATURES

An original design by Standard Rolling Shutters, the shutter slats are manufactured with our roll-form machines and allows a visibility of 25%.



OUTLOOK

The slats on the shutter are perforated hence allowing ventilation to occur as well as for visibility of store products when store lights are turned on even after hours.



SUITABILITY

Shopping Centres, Showrooms, Sporting Halls, Bin Compounds, Garages, Canteens and Food Stalls.



OPERATION

Automatic Operation with remote control/Biometric access control OR Manual Operation.



LOCKING

For manually operated shutters, the locking device will be installed at waist height or at a bottom rail.

For motorised roller shutters, the locking function is controlled by a push control.



MAXIMUM SIZES

8m width x 7m height



FINISHES

Powder Coat / Fluorocarbon-coated finishes



Our Products & Services
come with warranty.



Back to
Contents Page



SPEED ROLLER SHUTTER (MOTORISED)



FEATURES

This roller shutter uses non-metallic materials which allows for quick and quiet operation. It also uses an automatic safety system which stops the door immediately if it encounters resistance when rising and bounce upward when encountering resistance when lowering. This automatic roller shutter can also be operated manually in the case of a power outage.



OUTLOOK

Shutters are manufactured with anti-rust technology, which makes the door durable and anti-acid and base.



SUITABILITY

This system is suitable for banks, hypermarkets, coffeeshops, bin centres.



OPERATION

Automatic Operation with remote control/Biometric access control



LOCKING

Automatic lock



MAXIMUM SIZES

6m width, 6m height



FINISHES

Colourbond



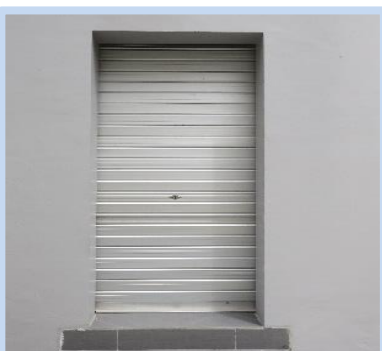
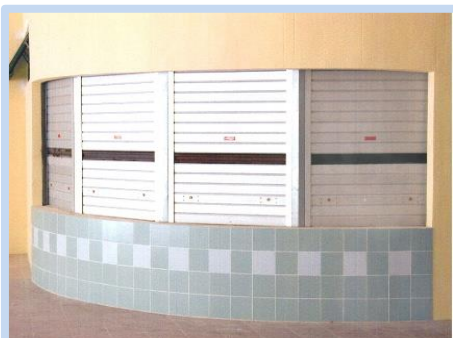
Our Products & Services
come with warranty.



Back to
Contents Page



MINI MANUAL SHUTTER



FEATURES

The mini manual shutter allows for lock up of push carts allowing for added security.



OUTLOOK

This shutter presents a pleasant and clean appearance.



SUITABILITY

The mini shutters are ideally used in push carts, stationary carts, counters, etc.



OPERATION

Manual Operation



LOCKING

Locks are installed either onto a slat at waist height or at the bottom rail with lock bars locking into both side of the door.



MAXIMUM SIZES

6m width, 6m height



FINISHES

Natural, bronze or black anodised, powder coated or fluorocarbon coated finishes



Our Products & Services
come with warranty.





HEAVY DUTY COLOURBOND WITH POWDER COAT SHUTTER



FEATURES

These shutters are designed to withstand vigorous handling in places such as warehouses and factories. Non-perforated and perforated slats are available for the customisation of the shutter. Integration of both slat types can also be done to suit our customers' needs.



OUTLOOK

These shutters have a strong heavy-duty outlook.



SUITABILITY

Warehouses, hangers, shipyard, factories, exhibition halls and other security installations.



OPERATION

Automatic/Motorised Operation with an auto-stop limit-switch connected to push button controls and/or Biometric access control.



LOCKING

Locking by optional accessories such as Integrated Door-Pass, Locking switch or Wireless Remote-control can also be incorporated into the shutter to suit customers' needs.

In the case of an emergency, a chain pulley can be used to operate the shutter manually.



MAXIMUM SIZES

Openings up to 12m width x 7m height



FINISHES

Galvanised, colour-bond, powder-coated, fluorocarbon-coated finishes

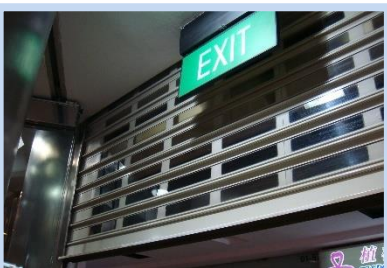
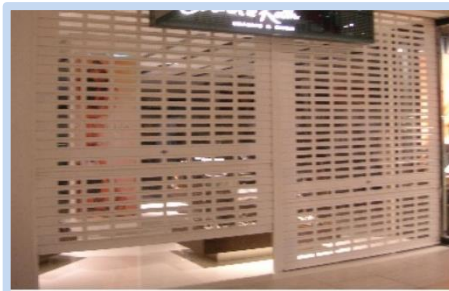


Our Products & Services
come with warranty.





SVPS POWDER COAT SHUTTER (MOTORISED/MANUAL)



FEATURES

The Screen Vision is an original design by Standard Rolling Shutters which offers great visibility as well as security.



OUTLOOK

Created with acrylic rows, this design enables transparency views from both inside and outside the premises.



SUITABILITY

These Screen Vision shutters are ideally installed in showrooms, shopping centres, display areas or banking halls.



OPERATION

Due to its lightweight, this shutter can be easily operated manually. However, a motorised/automatic operation with a remote control/Biometric access control shutter is recommended for doors with a wide opening.



LOCKING

- Manual Shutter: Locks will be installed at waist height or at a bottom-rail with lock bars locking into the side of the door.
- Motorised shutter: Operated by an electrically connected control box. Optional accessories such as remote controls are also available.



MAXIMUM SIZES

6.2m width, 6m height



FINISHES

Available in natural, bronze or black anodized and powder coated finishes



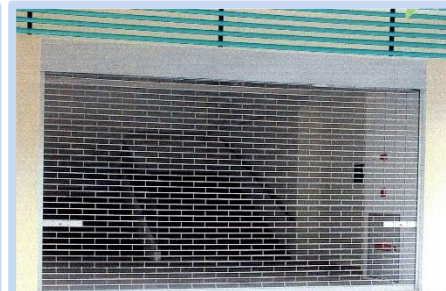
Our Products & Services
come with warranty.



Back to
Contents Page



ALUMINIUM GRILLE SHUTTER (MOTORISED/MANUAL)



FEATURES

The grille profile offers ventilation, visibility and security to buildings. Because of its lightweight, it can be operated easily.



OUTLOOK

This roller grille is designed to offer a brick-like profile. Additionally, some rows of aluminium flat slats can be incorporated into the shutter design if requested by our customers.



SUITABILITY

Ideal for shop window displays, showrooms, multi-storey car parks, garages, MRT station entrances.



OPERATION

Due to its lightweight, this shutter can be easily operated manually. However, a motorised/automatic operation with a remote control/Biometric access control shutter is recommended for doors with a wide opening.



LOCKING

- Manual Shutter: Locks will be installed at waist height or at a bottom-rail with lock bars locking into the side of the door.
- Motorised shutter: Operated by an electrically connected control box. Optional accessories such as remote controls are also available.



MAXIMUM SIZES

6m width, 6m height



FINISHES

Natural anodizing finishes



Our Products & Services
come with warranty.



Back to
Contents Page



GRILLE WITH ACRYLIC INSERTS SHUTTER



OVERHEAD SECTIONAL DOORS



GRILLE



Our Products & Services
come with warranty.



Back to
Contents Page



ACCESSORIES



Please call us at **(+65) 6745 3322** or
email us at srspl@singnet.com.sg for
enquiries.

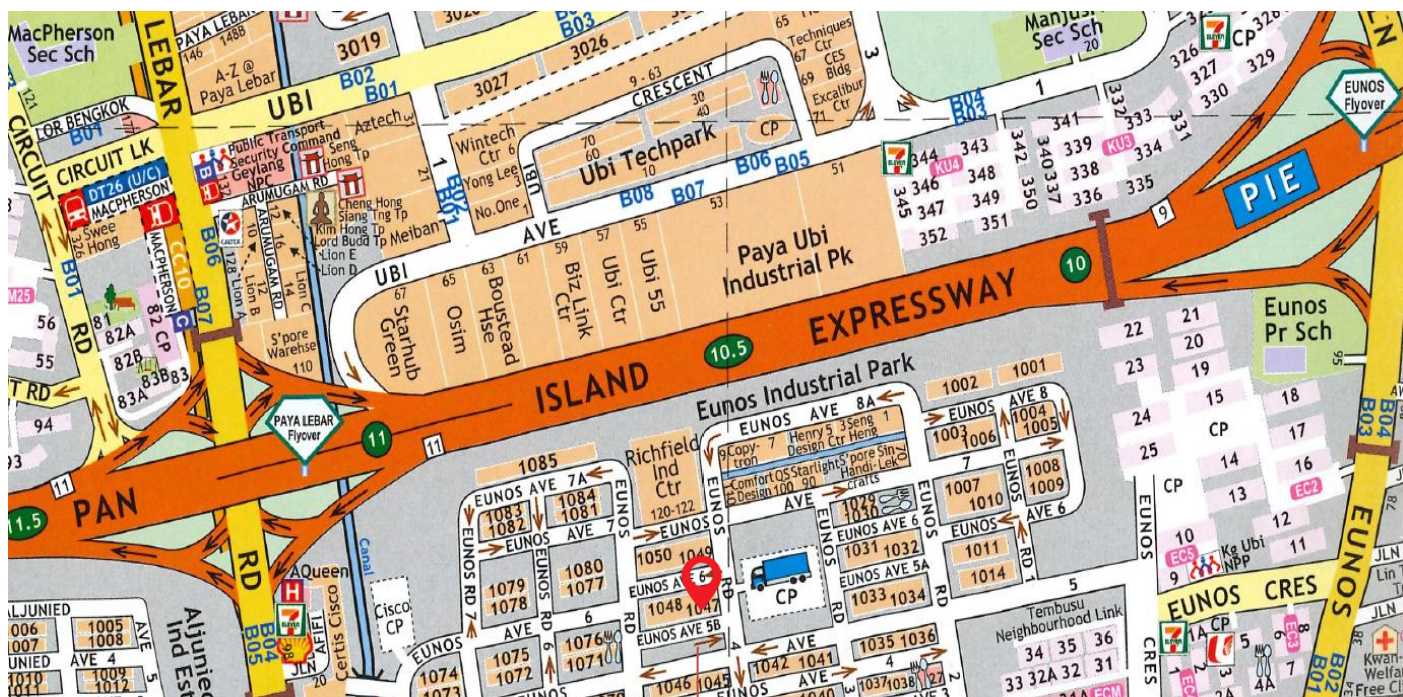


Our Products & Services
come with warranty.





CONTACT US



STANDARD ROLLING SHUTTERS PTE LTD

Click to see us on [Google Maps!](#)

Block 1047 Eunos Avenue 5B #01-10 Singapore 409668

Reg. No. 197802872C | GST Reg. No. M2-0032671-7



Back to
Contents Page

PR12/4429/CS1 ★ ● T:83.0
Bright White D:79.3
Gloss S:37

PR12/4370/C4 * Pearl White Gloss	T:85.3 D:81.7 S:3.6	PR12/4269/CS6 * RAL 9003 Signal White Satin	T:79.8 D:76.9 S:2.9	PR12/4761/CS3 * Surfmist Satin	T:64.3 D:61.7 S:2.6	PR12/81/CS7 * Frame White Satin	T:78.7 D:75.2 S:3.5
PR12/4371/CS1 * Satin White Satin	T:79.2 D:76.8 S:2.4	PR12/8741/CS2 * RAL 7047 Telegrey Satin	T:52.9 D:50.3 S:2.6	PR12/1253/CS1 * White Aluminium Satin	T:42.4 D:38.7 S:3.7	PR12/345/CS7 * RAL 5014 Pigeon Blue Satin	T:20.0 D:16.9 S:3.1
PR12/8332/CS4 * Grey White Satin	T:57.4 D:55.4 S:2.0	PR12/60169/CS2 * APO Grey Satin	T:42.8 D:40.4 S:2.4	PR12/60124/CS2 * RAL 7040 Window Grey Satin	T:34.6 D:31.5 S:3.1	PR12/318/CS10 * RAL 5007 Brilliant Blue Satin	T:13.5 D:10.5 S:3.1
FF160/858/CW25 * Light Grey Texture Wrinkle	T:55.3 D:52.7 S:2.6	PR12/8158/CS8 * RAL 7004 Signal Grey Satin	T:31.4 D:29.2 S:2.2	PR12/1237/C15 * RAL 9007 Grey Aluminium Gloss	T:27.2 D:22.0 S:5.2	PR12/363/CS21 * RAL 5012 Light Blue Satin	T:23.6 D:20.3 S:3.3
PR12/877/CS4 * RAL 7038 Agate Grey Satin	T:38.6 D:35.6 S:3.0	PR12/8334/CS2 * RAL 7042 Traffic Grey Satin	T:27.6 D:24.9 S:2.7	PR12/80075/CS2 * RAL 7046 Telegrey Satin	T:24.7 D:22.0 S:2.7	PR12/3106/CS6 * Ocean Blue Satin	T:12.8 D:9.4 S:3.4
PR12/827/CS15 * RAL 7032 Pebble Grey Satin	T:38.2 D:35.3 S:2.9	PR12/80745/CS4 * Armour Grey Satin	T:25.8 D:23.9 S:1.9	FF160/8367/C6 Trunking Grey Gloss	T:17.1 D:12.9 S:4.2	PR12/3251/CS46 * RAL 5005 Signal Blue Satin	T:10.7 D:8.2 S:2.5
PR12/80042/CS2 * RAL 7030 Stone Grey Satin	T:25.6 D:23.4 S:2.2	PR12/8901/CS1 * RAL 7012 Basalt Grey Satin	T:13.1 D:10.8 S:2.3	PR12/80573/CS8 * Ironstone Satin	T:10.1 D:7.4 S:2.7	PR12/359/CS1 * RAL 5010 Gentian Blue Satin	T:11.0 D:7.6 S:3.4
PR12/80169/CS1 * RAL 7039 Quartz Grey Satin	T:14.9 D:12.5 S:2.4	PR12/890/CS6 Matt Black Satin	T:8.0 D:5.2 S:2.8	PR12/81082/CS7 * Monument Satin	T:8.0 D:5.6 S:2.4	PR12/355/CS10 * RAL 5002 Ultramarine Blue Satin	T:9.7 D:6.0 S:3.7
PR12/892/CS10 * RAL 7024 Graphite Grey Satin	T:10.0 D:6.8 S:3.2	PR12/708/CM124 * Matt Black Matt	T:5.1 D:3.3 S:1.8	PR12/732/CS4 * RAL 9004 Signal Black Satin	T:4.6 D:2.1 S:2.5	FF160/7058/CT3 * Black Sandtex Texture	T:4.6 D:4.3 S:0.3

S: % Specular Reflectance



[Back to Contents Page](#)



COLOUR CHART FOR POWDER COAT

PR12/4249/CS1
RAL 9010 Pure White
Satin

T: 80.5
D: 77.7
S: 2.8

PR12/9210/CS17*
Pale Beige
Satin

T: 74.3
D: 71.7
S: 2.6

PR12/941/CS48*
RAL 1015 Light Ivory
Satin

T: 61.6
D: 59.3
S: 2.3

PR12/70437/C13*
Primrose
Gloss

T: 67.0
D: 63.6
S: 3.4

PR12/70367/CS6*
Beige
Satin

T: 53.9
D: 51.3
S: 2.6

PR12/70217/C1*
Rivergum Beige
Gloss

T: 62.2
D: 58.6
S: 3.6

PR12/70167/CS13*
RAL 1014 Ivory
Satin

T: 51.2
D: 48.2
S: 3.0

PR12/159/CS11
RAL 1018 Zinc Yellow
Satin

T: 52.6
D: 50.0
S: 2.6

PR12/263/CS2*
RAL 6027 Light Green
Satin

T: 39.6
D: 36.5
S: 3.1

PR12/70307/CS16*
Paper Bark
Satin

T: 48.1
D: 45.1
S: 3.0

PR12/9631/CS10*
RAL 3012 Beige Red
Satin

T: 33.4
D: 30.4
S: 3.0

PR12/127/CS8*
RAL 1023 Traffic Yellow
Satin

T: 45.6
D: 42.2
S: 3.3

PR12/2753/CS2*
RAL 6033 Mint Turquoise
Satin

T: 20.0
D: 17.0
S: 3.0

PR12/973/CS3
RAL 1019 Grey Beige
Satin

T: 27.9
D: 24.6
S: 3.3

PR12/9640/CS5*
RAL 8001 Ochre Brown
Satin

T: 17.0
D: 14.0
S: 3.0

PR12/164/C
Signal Yellow
Gloss

T: 52.9
D: 48.1
S: 4.8

PR12/315/CS23*
RAL 5018 Turquoise Blue
Satin

T: 19.7
D: 16.6
S: 3.1

PR12/9228/CS8*
RAL 7006 Beige Grey
Satin

T: 15.1
D: 12.6
S: 2.5

PR12/9385/CS5
RAL 8003 Clay Brown
Satin

T: 13.6
D: 10.4
S: 3.2

PR12/650/CS5
RAL 2000 Yellow Orange
Satin

T: 32.3
D: 29.5
S: 2.8

PR12/20543/CS5*
Rover Green
Satin

T: 37.5
D: 34.6
S: 2.9

PR12/995/CS16*
Desert Brown
Satin

T: 11.3
D: 7.6
S: 3.7

PR12/9354/CS12
RAL 8011 Nut Brown
Satin

T: 8.0
D: 5.2
S: 2.8

PR12/526/CS28
RAL 3020 Traffic Red
Satin

T: 24.4
D: 21.4
S: 3.0

PR12/2399/C10*
Mint Green
Gloss

T: 18.5
D: 15.0
S: 3.5

PR12/20209/CS4*
Mint Green
Satin

T: 20.7
D: 18.5
S: 2.2

PR12/90131/CS1
RAL 8028 Terra Brown
Satin

T: 7.6
D: 5.0
S: 2.6

PR12/509/C48
Signal Red
Gloss

T: 20.4
D: 16.4
S: 4.0

PR12/2045/CS2*
RAL 6001 Emerald Green
Satin

T: 10.5
D: 7.4
S: 3.1

PR12/2666/CS4*
RAL 6003 Olive Green
Satin

T: 9.7
D: 6.7
S: 3.0

PR12/90151/CS3*
RAL 8017 Chocolate Brown
Satin

T: 6.5
D: 3.7
S: 2.8

PR12/5093/CS7*
RAL 3005 Wine Red
Satin

T: 7.1
D: 4.4
S: 3.5

PR12/2234/CS10
RAL 6029 Mint Green
Satin

T: 9.9
D: 7.3
S: 2.6

PR12/20954/C12*
Rain Forest Green
Gloss

T: 7.6
D: 3.7
S: 3.9

PR12/90709/CS3*
Loft
Satin

T: 8.8
D: 6.2
S: 2.6

PR12/212/C11
RAL 6005 Moss Green
Gloss

T: 7.0
D: 2.8
S: 4.2

PR12/2561/CS7*
RAL 6028 Pine Green
Satin

T: 9.0
D: 6.1
S: 2.9

PR12/996/CS7*
RAL 8014 Sepia Brown
Satin

T: 7.2
D: 4.4
S: 2.8

* RoHS - Compliant • Non ex-stock

Colours shown on this card are approximate only due to, among other things, printing limitations.





POWDER COATINGS GENERAL CLASSIFICATION

TYPE	GRADE	GLOSS AT 60°	CURING SCHEDULE	DESCRIPTION
EPOXY for Interior	E6	Super matt 1-5 GU	200°C/10'	Excellent flow-out
	E29	Satin-glossy 60-100 GU	180°C/10'	Very good flow-out E29/Zincoprim:Anti-corrosion primer
	E39	Satin-glossy 60-100 GU	200°C/20'	Electronic & electrical insulation coating
	E61	Satin-glossy 70-100 GU	160°C/10'	Outstanding chemical, mechanical and corrosion resistance FDA-compliance
HYBRID (EPOXY-POLYESTER) for Interior	FF6	Matt 5-10 GU	200°C/10'	Excellent flow-out
	FF175	Matt 13-25 GU	180°C/10'	Very good flow-out
	FF190	Matt-satin 15-45 GU	190°C/10'	Excellent flow-out Very good overbake resistance compared to other matt hybrids
	FF165	Matt-satin 30-45 GU	180°C/10'	Excellent flow-out
	FF160	Satin-glossy 50-95 GU	180°C/10'	Very good flow-out Good overbake resistance and excellent mechanicals
	SP	Matt (Moire) 1-10 GU	200°C/10'	Moire finish (Water-silk) Excellent mechanicals
POLYESTER for Exterior	PR12	Matt-glossy 25-95 GU	200°C/10'	Standard-durable 5-year Product Warranty*
	PR28	Glossy 90-100 GU	200°C/10'	Standard-durable Clear-coat
	PR10	Matt 5-25 GU	200°C/10'	Standard-durable
	APR	Matt-glossy 25-95 GU	200°C/10'	Super-durable 10-year Product Warranty*
	SPR	Satin-glossy 50-95 GU	200°C/10'	Super-durable 15-year Product Warranty*
	PX50	Satin-glossy 50-95 GU	180°C/10'	Standard-durable TGIC-free
	PT1	Sand Texture 5-10 GU	200°C/10'	Very good durability Basecoat for Image Transfer
FLUORO-POLYMER for Exterior	SOLAR-HYD	Matt-satin 25-70 GU	200°C/15'-20' or 205°C/12'-15'	Hyper-durable Thermosetting fluoropolymer 20-year Product Warranty*
POLYURETHANE for Exterior	PU1	Satin-glossy 50-95 GU	200°C/10'	Standard-durable Enhanced chemical resistance
	PU5	Satin-glossy 40-90 GU	210°C/10'	Anti-graffiti properties, excellent chemical resistance
	PT3	Sand Texture 10-20 GU	200°C/10'	Excellent durability Basecoat for Image Transfer

